



BRANXTON

Public School

Parent Information Booklet

Our school PBL expectations are:

Respect
Responsibility
Personal Best



Established 1863

ACKNOWLEDGEMENT OF COUNTRY

We would like to acknowledge the traditional custodians of this land, the Wonnarua people.

We pay our respects to the Elders, both past and present, and to those of the future, for they hold the memories, stories, traditions, hopes and cultures of Aboriginal Australia. We would like to extend that respect to Aboriginal people present here today.



CONTENTS

Contact Details/School Times.....	Pg. 5
Principals' message.....	Pg. 5
<u>PBL POSITIVE BEHAVIOUR FOR LEARNING</u>	
Information.....	Pg. 6
Bullying-Anti Bullying Strategies.....	Pg. 6
Rewards System.....	Pg. 8
Peer Support/Buddy Program.....	Pg. 9
<u>SCHOOL UNIFORM</u>	
Girls' Summer/Winter.....	Pg. 10
Boys' Summer/Winter.....	Pg. 11
Sports Uniform.....	Pg. 12
<u>STUDENT WELLBEING</u>	
Attendance.....	Pg. 13
SMS Absence.....	Pg. 13
Late Arrivals/Early Departures.....	Pg. 13
Supervision.....	Pg. 14
Assessment and Reporting.....	Pg. 14
The School Counsellor.....	Pg. 14
Travel to School by Bus.....	Pg. 15
<u>COMMUNICATION</u>	Pg. 16
<u>GENERAL SCHOOL INFORMATION</u>	
Collection of Money.....	Pg. 17
Parent Online Payment.....	Pg. 17
School Contribution.....	Pg. 17
Your Contact Details.....	Pg. 18
Access Restrictions.....	Pg. 18
Lost Property.....	Pg. 18
Toys and Valuables at School.....	Pg. 18
Photographs at School.....	Pg. 19
School Banking.....	Pg. 19
Parent Involvement.....	Pg. 19

HEALTH & MEDICAL

Student Illness or Accident.....	Pg. 20
Administering Prescribed Medication at School.....	Pg. 20
Food Allergy Awareness.....	Pg. 20
Health Care Plans.....	Pg. 21
Asthma.....	Pg. 21
Sun Safe Policy.....	Pg. 21
Immunisation.....	Pg. 21
Infectious Diseases Information.....	Pg. 22

PARENT & CITIZENS ASSOCIATION

Information.....	Pg. 23
Committee	Pg. 23
Uniform Shop.....	Pg. 23
Volunteers.....	Pg. 23
Canteen Operations.....	Pg. 24
Breakfast Program.....	Pg. 24

CURRICULUM-KEY LEARNING AREAS

General Information.....	Pg. 25
English.....	Pg. 26
Maths.....	Pg. 26
Science.....	Pg. 27
Technology.....	Pg. 27
Creative Arts.....	Pg. 28
PDHPE.....	Pg. 28
Geography/History.....	Pg. 29
Library / Book Club.....	Pg. 30
Sport	Pg. 31
High School.....	Pg. 32
School Song.....	Pg. 4

SCHOOL SONG

In the beauty of our region in the Hunter Valley Fair,
Just to be a part of Branxton where for life we do prepare,
From the mine and from the vineyard to the farm across the way,
Live and learn with “Pride and Honour” is our motto ev’ry day.

CHORUS

Branxton, Branxton Public School,
Holding high the Golden Rule,
Living and Learning we are the green and white
Pride and Honour,
Yes, our motto’s right,
Stand up proudly and make our future sure
BRANXTON PUBLIC SCHOOL for ever more.

We are children of Australia in our land so young and free,
And we’re proud to come from Branxton and to share its history,
As we study for our future give our best in work and play,
Live and Learn with “Pride and Honour” is our motto ev’ry day.

CHORUS

Branxton, Branxton Public School,
Holding high the Golden Rule,
Living and Learning we are the green and white
Pride and Honour,
Yes, our motto’s right,
Stand up proudly and make our future sure
BRANXTON PUBLIC SCHOOL for ever more

Principal's Message

It is with great pleasure that I welcome new parents and carers to Branxton Public School. Our school has a long and proud history of providing quality education for the students in the Branxton area.

Branxton Public School is committed to providing our students with learning opportunities, both in and out of the classroom, that help develop individuals to be the best version of themselves they can be.

The purpose of this booklet is to provide some information about day-to-day organisation and administration processes at Branxton Public School. It is important that the school and home communicate and work together to ensure the best possible learning outcomes for students.

All teachers at Branxton Public School are committed to ensuring the best possible learning experiences for children in a safe and challenging environment. Teaching and learning programs are responsive to individual needs and the school is well supported to help students who may be experiencing difficulty in their learning.

Please contact the school should you require further clarification on the policies and practices of the school, or have further questions about how we can best support your child.

Joanne Ferguson

Principal

Branxton Public School



CONTACT DETAILS

Phone: 02 4938 1214

Fax: 02 4938 1905

Address: 12 King Street, Branxton NSW 2335

School Email: branxton-p.school@det.nsw.edu.au

School Webpage www.branxton-p.schools.gov.au/

Facebook: www.facebook.com/branxtonpublicschool

School Times

Commencement Bell: 9:10 am

Finishing Bell: 3:10 pm

PBL- Positive Behaviour for Learning

The PBL (Positive Behaviour for Learning) processes are incorporated into our school and its community. Our expectations of Respect, Responsibility & Personal Best are embedded in all aspects of school life. We are continually refining and improving our PBL processes to ensure they meet the needs of our students and our school.



A poster for 'RESPECT' with a blue background, a rainbow at the top, and a cartoon dog superhero in the top right corner. The Brankton Public School logo is in the top left.

RESPECT

WE:

- Listen
- Care
- Treat others kindly

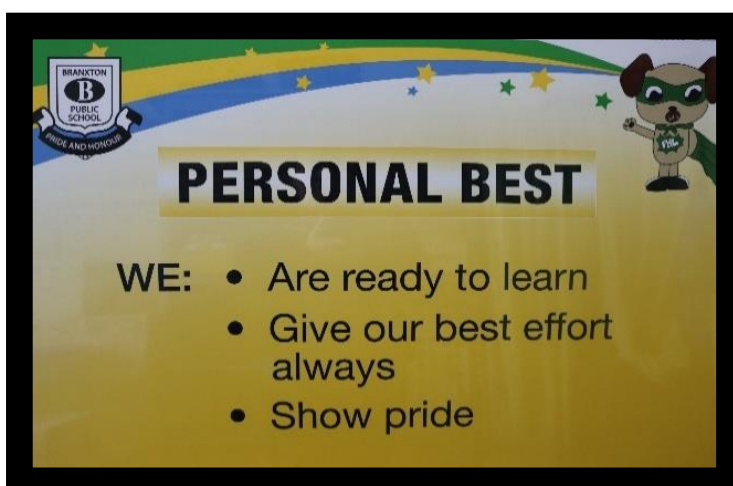


A poster for 'RESPONSIBILITY' with a green background, a rainbow at the top, and a cartoon dog superhero in the top right corner. The Brankton Public School logo is in the top left.

RESPONSIBILITY

WE:

- Act safely
- Are in the right place at the right time
- Own our actions



A poster for 'PERSONAL BEST' with a yellow background, a rainbow at the top, and a cartoon dog superhero in the top right corner. The Brankton Public School logo is in the top left.

PERSONAL BEST

WE:

- Are ready to learn
- Give our best effort always
- Show pride

PBL- Positive Behaviour for Learning

PBL is an evidence based, whole school approach to wellbeing, which promotes positive learning environments and addresses the academic, social and wellbeing needs of our students.

The framework supports all students in developing social skills and positive choices in our school setting. We have 3 expectations: Respect, Responsibility and Personal Best. Each week, we explicitly teach the positive behaviours for our focus area. Teachers and students participate in lessons which involve discussion, role play and reflection.

Through the PBL rewards system students receive stickers, tickets and certificates. An overview is provided on the next page.

PBL Assemblies are held twice a term, usually in Weeks 5 and 10. Parents are most welcome to attend. This coincides with a Rewards Afternoon for those students who have been successful in obtaining their next merit certificate. Students determine the activities for the Rewards Afternoons through our SRC (Student Representative Council).



Bullying- Anti Bullying strategies

Our School rejects all forms of bullying behaviours, including online (or cyber) bullying by maintaining a commitment to providing a safe, inclusive and respectful learning community that promotes student wellbeing.

Staff are committed to establishing evidence-based approaches and strategies that promote a positive climate where bullying is less likely to occur. To support this we have specific anti – bullying programs such as: Peer Support and “Bounce Back” Strategies. These are embedded in our PBL lessons and we also work hard in building student and group resilience.

PBL Positive Reward System



Respect, Responsibility and Personal Best



STICKERS -



Placed in matching section of Passport



TICKETS -

2 Teacher signatures in passport for matching expectation

Ticket stub into class ticket box or playground box

Weekly Stage draw of ticket stubs at Monday morning assembly

Teacher ensures all stickers and signatures are completed in passport daily at 3pm.

10 stamps per expectation



100 house points

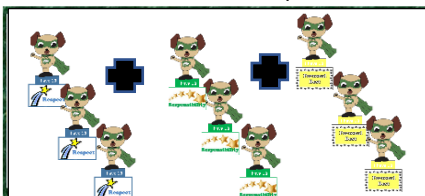
Certificate for that expectation



Weekly Certificate from class teacher = 10 Teacher signatures for that expectation

Zero Hero Certificates = 10 Teacher signatures for Personal Best

3 certificates for each expectation



Eligibility

MAJOR	MINOR
3	irrelevant
2	3
1	6
0	9



If ineligible, 10 more stickers are required in the passport for the identification expectation

Once each level is achieved students start again working towards their next merit

MERIT LEVELS -



Students receive a badge with their first Principal's award and a medallion with their second Principal's award.

Kinder Buddy and Peer Support Programs

Kindergarten Buddies and Peer Support Programs The Kinder Buddy program is designed to support our new Kindergarten students in feeling safe and connected when they start 'big school'. Buddies are allocated during orientation and continue through the whole of the students first year of school. Our buddies support our kindergarten students by showing them around the school, reading and learning with them and supporting them when things may get a little overwhelming.

In Term 2, the Peer Support Program involves all students Kindergarten to Year 6 working in small student- lead groups to complete activities. The program has been built around the foundation of the ACARA Personal and Social Capabilities Framework. Through Peer Support students will develop networks and learn social skills, including communicating and cooperating, in multi-ages groups, through activities lead by Year 6 students. The lessons have been designed to reflect our school's PBL expectations of Respect, Responsibility and Personal Best. For Year 6 students, Peer Support develops their leadership skills and supports Year 6 students to promote the school expectations.





Girls' School Uniform

Girls' Summer Uniform

School Polo Shirt

Green Shorts/Skort

NO TIGHTS OR BIKE PANTS

White Socks

Black/White Shoes

Green or White Hair Accessories

Green School Hat



Girls' Winter Uniform

School Polo Shirt

Green School Jumper with
emblem

Long Green Pants

White Socks

Black/White Shoes

Green School Hat



Boys' School Uniform

Boys' Summer Uniform

School Polo Shirt

Grey Shorts

Grey Socks

Black/White Shoes

Green School Hat



Boys' Winter Uniform

School Polo Shirt

Green School Jumper with
emblem

Long Grey Pants

Grey Socks

Black/White Shoes

Green School Hat



School Sports Uniform

House Sports shirts are available in the respective House colours.
Each term your child will be advised as what day they will participate in sporting activities.

Wallabies: Blue

Kangaroos: Yellow

Hawks: Green

Eagles: Red

Girls' Sports Uniform

House Sport Polo Shirt
Green Shorts/Skort/ Trackpants
NO TIGHTS OR BIKE PANTS
White Socks
White Joggers
Green or White Hair accessories
Green School Hat

Boys' Sports Uniform

House Sport Polo Shirt
Green Shorts/ Trackpants
White Socks
White Joggers
Green School Hat



Student Wellbeing

Attendance

All children are required by law to attend school from the age of 6 years. Some children attend school below the age of 6 years. Once a child is enrolled, it is expected that he/she will attend school every day.

The Department of Education accepts few reasons for absence. In general, they are:

- The child is too sick to leave the house
- The child has an infectious disease
- The child is incapacitated by injury and unable to move around the school
- Religious commitment or annual family holiday by arrangement with the Principal
- Emergency dental or doctor appointments (although after school is preferred)

It is a legal requirement that all absences be notified to the school within 7 days.

SMS Absence and Message System

Branxton Public School uses an SMS Absence and Message Notification System. If your child is marked absent from school you will receive an SMS notification.

Parents should reply to these messages with an explanation of the absence, otherwise the absence will be recorded as unjustified. Alternatively you are able to submit an Absentee form on Skoolbag.

Late Arrivals / Early Departures

School hours are from 9:10am – 3:10pm. It is a legal requirement that parents give an explanation for a variation in attendance.

If children arrive later after the start of the school day, parents are requested to accompany them to the office, where a late note will be printed for you. The form is then taken to the class teacher by the child. An occasional late absence is understandable, but continual late absences impact upon the learning of children.

Similarly, if children leave early, parents are requested to go firstly to the office, where the reason for leaving early is recorded and the child will be called to the office.

Supervision

Supervision commences at 8:40am. Students should not arrive before 8:40am. If for any reason your child arrives before this time, they are to remain seated under the COLA.

Assessment and Reporting

In line with updated Department of Education policies, the school has a reporting system to show parents their child's progress in relation to the expected stage outcomes in the six Key Learning Areas. A variety of assessment tasks and tests are designed throughout the year, as part of the regular class program, and work samples will be collected to demonstrate the level of attainment towards the outcomes.

The formal reporting process will include:

- Written Student Reports at the end of Term 2 and Term 4, based on student progress in relation to stage and grade syllabus expectations
- Parent-Teacher Interviews at the end of Term 1.

Parents can make appointments with teachers at other times to discuss their children's wellbeing, performance and progress. As teachers have a range of teaching, school management and student supervision responsibilities, it is more convenient if the appointment times are negotiated with teachers. The Principal or Assistant Principals are also available to discuss parent concerns. Working together, as parents and teachers, will ensure the very best wellbeing and learning outcomes for your child.

The School Counsellor

The School Counsellor is a trained psychologist and experienced teacher, with additional specialist training in the area of counselling. The School Counsellor is a part-time member of our staff, who is concerned with students experiencing difficulties and/or behavioural or emotional problems as well as supporting families and being an integral member of the School Learning Support Team.

When teachers are concerned about a student, they are able to refer that child to the Learning and Support Team, who will then contact the parents to discuss these concerns. The Counsellor may then conduct interviews and/or tests to help determine the most suitable methods of helping the student who has been referred. Some students and/or parents may be referred to agencies outside the school for further specialist assistance.

Travel to School by Bus

You can apply online regardless of whether a student needs to travel inside the Opal network or in rural or regional areas. Apply online at <https://apps.transport.nsw.gov.au/ssts/>

Depending on the transport operator you select for the school journey, the transport department will advise whether the student will receive a School Opal card or a Rural/Regional School Travel Pass.

Hunter Valley Buses is the bus operator for the Huntlee Estate and the east side of Branxton, they use the Opal card system.

Grace Coaches is the bus operator for the North Rothbury and Greta areas, they use the Rural or Regional pass. Students will be given an OLLI card from the driver in due time.

All students in Kindergarten, Year 1 and Year 2 are entitled to travel to school by bus free of charge if going directly from home and returning to home.

Students in Years 3, 4, 5 and 6 who live less than 1.6 km radius from the school are not entitled to free bus travel but can purchase an Opal child/youth from an Opal retailer or apply at opal.com.au.

At the end of year 2 Parents must reapply

Complaints of misbehaviour on the bus must be directed to the bus company as they are responsible for the control of children in their care. As a matter, of course the school should be contacted. The school expects a standard of behaviour to be maintained whilst the students are in school uniform.



Parent and School Communication



BRANXTON
Public School



Parent and School Communication Systems



This App is for:

- ✓ All Whole School Communication
- ✓ Excursion and Permission Notes
- ✓ Notifying the school of absences
- ✓ Emergency announcements
- ✓ Newsletters
- ✓ Medical alerts
- ✓ Surveys
- ✓ Notification of special events and/or fundraisers
- ✓ Reminders and Branxton Public School news updates
- ✓ Notification of Community events school is involved in

While this is a public site, communication sent by parents and carers is secure, going to the school and Principal's email addresses only.

All parents and carers require this App

NB: See over page for instructions to download the free App



This communication platform is for:

- ✓ Communicating with classroom teacher
- ✓ Celebrating individual class events, activities and special occasions
- ✓ Sharing student work
- ✓ Sharing photos
- ✓ Homework reminders
- ✓ Homework, reading, writing and maths tips for parents

This secure site is accessible through a login from the classroom teacher.

This platform is recommended but not essential for all parents and carers.

Any compliments, comments or complaints should be forwarded to:

- the school email – [Branxton.school@det.nsw.edu.au](mailto:branxton.school@det.nsw.edu.au)

Branxton Public School Facebook Page

This social media platform is for:

- ✓ Celebrating whole school success stories
- ✓ Celebrating individual class success stories
- ✓ Celebrating individual student success stories
- ✓ Sharing photos
- ✓ Promoting school success stories
- ✓ Promoting school events

This is a Public Site for good news posts and responses.

This social media platform is optional and not essential for all parents and carers

The P&C Facebook page is for P&C events and agendas only.



P&C Flexischools App for Canteen & Uniform Shop Orders.



BRANXTON
Public School



Accessing Parent and School Communication Systems



How to install the SkoolBag App
Instructions for parents



For Apple Users

- From your iPhone/iPad, Go to the Apple App Store and search for "SkoolBag".
- Download the free SkoolBag app.
- Open the App and add your school(s) and you're ready to go!
- Choose your grade/grades and "allow notifications".

For Google Android Users

- From your Android device, ensure you have an account in the Google Play Store.
- Go to Google Play Store and search for "SkoolBag"
- Download the free SkoolBag app.
- Open the app, add your school(s).
- Choose your grade/grades and "allow notifications".

For more info visit skoolbag.com.au



Your child will receive a print out of a QR Code. This is unique for each child and matches them with their new class.



Connect to Seesaw to receive important updates from Aidan and Teacher in Kindergarten 2019-2020.

Your child will need to Seesaw to share their learning with you.

Teachers will also send you messages and reminders.

Seesaw is private. You'll only see posts created by your child or their teacher.



From Your Smartphone

1. Download the free Seesaw Family app for iOS or Android
2. Choose "Create Family Account"
3. Scan this QR Code using Seesaw's built-in QR code scanner
4. Create your account

From Your Computer

1. Go to www.seesaw.com
2. Choose your child from the list
3. Create your account
4. Once you're approved by Teacher, you'll get access to Seesaw

Already Have an Account?

1. Sign in to your account in Seesaw Family app or on the web at www.seesaw.com
2. Click on your profile icon, click "Add Child's Journal" button, then scan the QR code above



1. Download the Flexischools App
Note: for iPhone and iPad please select 'Allow' notifications.



2. Add your School and Group

Click on the search icon, enter your school name, select your school and year group, or groups relevant to you.

3. Login/Register

Click the 'Order now' button located in the bottom right-hand corner of the app, this will open a login screen.

- **Already a Flexischools user** - Enter your details and login. To save your login details select 'remember me'.
- **New Flexischools user** - Click 'Register', enter your email address and follow the instructions in the email to set up your account. Once your account is set up, add new student; search for our school, enter student details and select their class.

General School Information

Collection of Money

Throughout the year, money is frequently collected at school as payment for student participation in excursions, visiting performances, sporting events and other educational programs. All permission notes and money for school activities and excursions are due as stated on the note supplied.

When money is brought to school, the correct amount should be placed in an envelope which clearly states Child's Name, Class and purpose for the money.

Parent Online Payments

Branxton Public School **does not** offer eftpos facilities. Parents can pay for fees and excursions with their Visa/Mastercard Credit or Debit card via a secure online payment facility which is hosted by Westpac. This facility can be accessed from our SkoolBag App or the home page of the school's website by clicking on the \$ "Make a payment" button. The school's website address is <http://www.branxton-p.schools.nsw.gov.au/>

Some guidelines are provided below:

- Only one child can be paid for during each transaction, but you can pay for multiple excursions/events for each child in a single transaction.
- Payments should be made a couple of days prior to payment cut off dates to allow for bank processing times.
- Please ensure to note your receipt number on your permission form to ensure your payment has been processed correctly.

Only cash and cheque payments can be receipted at the school office.

School Contribution

The "Family School Contribution" refers to the voluntary contribution scheme that all public schools operate. This is a very low \$50.00 per family per year. This money goes to providing the everyday resources needed in classrooms - pencils, paper, books, teaching aids, counters, craft supplies, reading books, etc, available to every child. Payment of as little as \$2.00 per week or \$12.50 per term is possible if you prefer.

Your Contact Details

Please ensure your details are kept up to date. If there is an accident or an emergency it is imperative that we have the correct details. Please notify the office of any changes to your address or phone numbers ASAP.

Access Restrictions

When children attending school are in the custody of one parent or guardian, a copy of the court orders outlining the conditions should be provided to the Principal. It is important that this procedure be carried out in the interests of your child, so that the school is aware of the situation. The Department of Education has guidelines that we are required to follow.

The school must sight the original documents and all details are treated in the strictest confidence. Any Changes to orders must be provided to the school as soon as possible.

Lost Property

All schools seem to collect a large amount of clothing which is lost throughout the year. Our school is no exception.

The simplest way to avoid lost property is to clearly mark all your child's clothing and other belongings, with his/her name. Should you overlook this, there is a lost property tub at school located near the Canteen.

Toys and Valuables at school

We ask parents to avoid sending toys and other personal items to school as they may become lost or broken. Toys, including electronic games and collectables, should not be brought to school unless requested by the teacher for specific lessons.

Students, who bring personal items to school for news, must remember that whilst all care is taken, the school cannot accept responsibility for any items that go missing or are damaged.

Photographs at School

Photographs are taken of students frequently at school and are often used for Newsletters, School Websites, Facebook and Newspapers. If you DO NOT want your child's photo to appear on these sites or in these publications, please indicate this on your child's enrolment forms.

Parent Involvement

In the interest of child protection and general safety issues, all visitors to Branxton Public School are to sign the Visitors Register in the School Administration Office. All class support volunteers are to complete a "*Declaration for Volunteers*" form and supply 100 points of identification. Please see the School Administration Office for further information. All visitors, classroom helpers and canteen helpers are to wear a visitors lanyard when on site. These are available from the sign on area.

Health and Medical

Student Illness or Accident

In the event of a student becoming ill or injured while at school a parent or guardian will be informed by telephone or other means as soon as possible. The student will be kept under observation until the parent or guardian arrives.

If the parent or guardian is not available and the pupil's condition appears to suggest the need, the Ambulance will be called to advise the Principal as to future action. The Principal or nominee will inform the parent or guardian as soon as possible of the action taken.

If a child has a medical history, particularly of recurrent illness, or an allergy, the parent should discuss the child's condition with the Principal.

Administering Prescribed Medications at School

If a student requires medication that was prescribed by a medical practitioner to be administered in school time, parents must fill in a form that can be obtained from the office. The prescription MUST state the precise time and dosage to be administered. This medication must be handed to the office upon arrival to school. School staff do not administer medication that has NOT been prescribed by a medical practitioner.

Allergy Awareness - Anaphylaxis

A few of our students suffer from life-threatening allergies to nuts and eggs – ANAPHYLAXIS. These students' reaction to nuts and eggs can begin with a smell, touch or taste of products and it can rapidly escalate to becoming a life-threatening reaction. Our aim at Branxton Public School is to make our school a happy and safe place for all our students, so it is requested that peanut butter, nutella, any products that contain nuts and egg (egg sandwiches, hard boiled eggs etc) NOT be bought to school. Products that are labelled "may contain traces of nuts" can be consumed at school.

Several students also have severe allergies to animal hair. Should you wish to bring any animal onto the school grounds, prior approval will need to be obtained and a risk assessment will need to be completed.

Health Care Plans

If a student has acute health needs, an individual Health Care Plan must be completed. Some conditions that require a Health Care Plan are Asthma, Diabetes, Epilepsy and Anaphylaxis

Asthma

All students who have asthma are entered in the Asthma Register for emergency treatment purposes and must have an Asthma Action Plan developed with their doctor and submitted to the school. Each year parents of asthmatic students are required to update their details. Medication needs to be provided to the school along with a spacer for individual use. Again, any changes must be advised immediately

Sun Safe Policy

As part of the school's sun safe policy, we have a **NO HAT, PLAY IN THE SHADE** rule. It is expected that all students will wear a school hat when they are outside in order to reduce the risk of sun exposure. Students without hats are directed to play under areas of shade.

Immunisation

The Department of Health recommends that children entering school be fully immunised. Immunisation is available from your family doctor or the local council. On completion of vaccination you will receive an Immunisation Certificate from Medicare. The original is to be sighted by the office.

Booster Immunisation - Students starting school who have not already had booster immunisation should have one booster injection against diphtheria and tetanus (C.D.T.) and one booster dose of polio vaccine by mouth (Sabine). Please contact your family Doctor or Community Health Centre for details. Dates and times of clinics can be obtained from your local council.

Infectious Diseases and Minimum Exclusion from School

Chicken Pox	7 days after first spots appears. Sores must be scabbed over
German Measles	7 days after first spots appears
Measles	5 days after rash appears
Mumps	10 days after swelling appears
Glandular Fever	Exclude till fully recovered, or on receipt of medical certificate
Hepatitis	Exclude till subsidence of symptoms, or on receipt of medical certificate of recovery. Minimum 7 days after onset of jaundice
Head Lice	Hair must be treated with special anti-lice lotion or shampoo, available from a chemist and lice and eggs removed
Conjunctivitis	Exclude until discharge from eyes has ceased
Impetigo	Exclude until sores have healed. Child may return if treatment is being carried out and if sores are completely covered with a dressing
Ringworm	Exclude until treatment completed, supported by a medical certificate
Scabies	Exclude until treatment completed, supported by a medical certificate

Parents and Citizens Association

The P & C Association invites you to be involved with your child's school by becoming involved in your P & C. Meetings are held monthly. The meetings are on a Monday at 6.00pm in the school library. All meetings are advertised in the school newsletter and on our Facebook Page. Everyone is most welcome to attend. The P & C provides numerous services within the school including Mothers/Fathers Day stalls, the canteen and the uniform shop. The P&C have also funded projects such as playground equipment, smartboards for classrooms, air conditioners for classrooms and purchasing sporting equipment. Without parent support, this would not have been possible.

NEW MEMBERS ARE ALWAYS WELCOMED AND ENCOURAGED

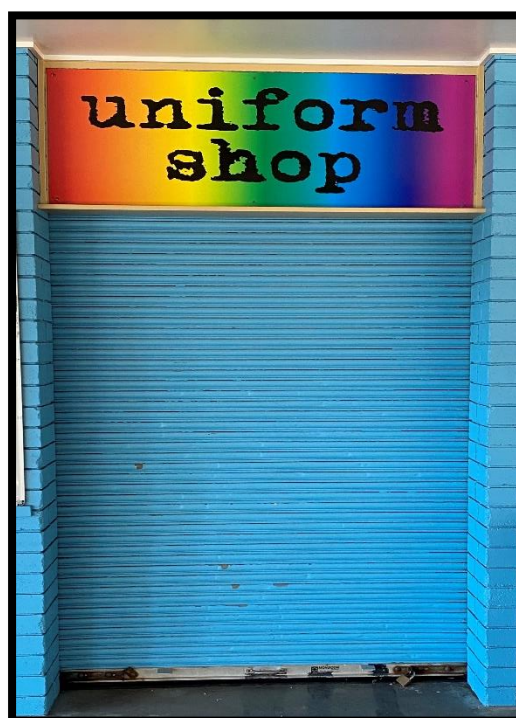
Uniform Shop

The Uniform Shop is open every Thursday from 8:45 am to 10:00 am.

All items are available to be purchased through the Flexi-Schools App.

All orders are packed Thursday mornings and delivered to your child's classroom.

Second-hand clothing is also available from the Uniform Shop.



Volunteers

The canteen and P&C are always on the lookout for volunteers for its roster. If you can help in anyway, please contact the school office.

Canteen Operation

Branxton Public School is lucky to have a canteen that operates 4 days a week. It is managed by Sharyn Baker and parents that volunteer their time to help. Children may purchase items at Breakfast, Recess and Lunch. We have an online ordering system available through Flexischools.

Flexischools is a free App that can be downloaded from your app store. We encourage children not to bring large amounts of money to school.

Please see the FlexiSchools App for the most up to date menu items.



Breakfast Program

Mrs Sharyn Baker operates a Breakfast Program at school each morning from 8:40 am to 9:00 am. Cereal, toast, milk are some of the items that can be purchased to ensure students are ready to start the day effectively.

Simplify your day.

Our school now has Flexischools for online ordering and cashless payment. From your mobile or desktop

STEP 1: Register for Flexischools
*Add your student and their year level to get started.

STEP 2: Top-Up your Account
*Choose from Visa, Mastercard, PayPal or direct deposit.

STEP 3: Order and Pay
*Select from a range of customisable options on your school menu.

STEP 4: Review Orders
*Set a recurring order, view transaction history or cancel an order via your Flexischools login.

CURRICULUM: KEY LEARNING AREAS

The Board of Studies (BOSTES) has developed six key learning areas for schools which form the curriculum to be taught from Kindergarten to Year 6.

The six KLAS are:

English (Incorporating Speaking & Listening, Reading & Responding and Writing & Representing)

Mathematics (Number & Algebra, Measurement & Geometry, and Statistics & Probability)

Science & Technology

History & Geography

Creative Arts

Personal Development, Health and Physical Education (PDHPE)



English

Students are provided with a daily program which promotes skill development in reading and viewing, writing, and representing, speaking and listening in a supportive and stimulating environment. Planning for the Program is based on the New South Wales Curriculum. Students are provided with challenging literacy opportunities that allow for success. Teachers focus on catering for the individual needs of each child. Take home books to practise reading are used each week.



Mathematics

All students are provided with a high quality daily mathematics program based on the New South Wales Curriculum. Children throughout the school develop their numeracy skills through open ended and challenging tasks. Flexible groupings are carried out to cater for students individual learning needs. Problem solving is embedded through all maths units.



Science

Our aim is to make Science a highly regarded area of our school week. With the advent of the most recent Science Syllabus, hands on activities have become a major part of the children's learning. With this in mind Branxton P.S. has set a high engagement level as a standard for most Science lessons. From Kindergarten to Year 6 the children are encouraged to join, have a go, make predictions and prove theories.

We are constantly renewing our existing equipment and purchasing new items which will make our 'hands-on' Science accessible for all children.



Technology

The School is continuing to develop our computer & technology facilities with computers & internet access in each classroom. We also have Smartboards (IWB's) and Comm boxes in all of our classrooms. Students also have access to a wide variety of ICT equipment including iPads, mobile laptops and digital cameras.



Creative Arts-Music, Visual Arts, Dance, Drama

Branxton Public School has an extensive Arts Programs which is highly regarded by the wider community. Children are offered opportunities in dance, choral and instrumental programs.

Dance and choir programs run for our students which frequently culminate in a performance at festivals, Rutherford Technology High School or special school events

All students from Kindergarten through to Yr 6 participate in weekly Art classes using a variety of different media. Beautiful and unique paintings, drawings and ceramics are on display in all the classrooms.



PDHPE

Personal Development, Health and Physical Education (PDHPE) develops the knowledge, skills and attitudes students need to lead healthy, active and fulfilling lives.

Students learn about the importance of good food and regular exercise.

They learn how bodies grow and change over time. They learn skills to play individual and team sports, and the values of sportsmanship and team work.



Geography

In Geography students will:

- investigate environments and communities across local to global scales
- develop an understanding of being informed, responsible and active citizens
- undertake inquiry-based learning to explore and understand the world.

Through the new Geography syllabus there is:

- An emphasis on contemporary geographical concepts such as place and sustainability.
- A more specific focus on geographical skills and tools, for example maps and spatial technologies.
- More emphasis on the role of fieldwork in geographical inquiry.



History

In History students:

- study familiar topics, such as:
 - personal, family and community histories in Early Stage 1
 - local community history in Stage 1
 - British colonisation and Indigenous peoples in Stage 2
 - the development of Australian democracy in Stage 3.

The most current syllabus has:

- A more specific focus on the sources of history and the question 'How do we know?'
- A more specific integration of historical concepts such as 'cause and effect' and 'change and continuity'.
- More emphasis on specific historical skills such as sequencing time, source analysis and historical perspectives.
- New topics such as migration which will be studied in Stage 3.

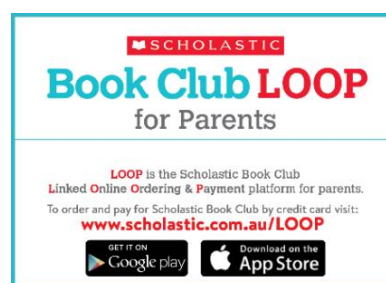
BPS Library

Our library helps children to develop into 21st century citizens who can locate, evaluate and use information effectively. It is also the library, along with the classroom and home, that will lay the foundations of a love of literature and reading.

Our school library boasts a very wide selection of items catering for all ages. We promote an interest in reading from a range of fiction, non-fiction and digital sources.

Each year we participate in the Premier's Reading Challenge and Children's Book Council promotions which are a great stimulus for encouraging reading.

- Borrowing of books will take place weekly when each class has their library lesson. Students may also borrow before school Mon-Thurs
- Students may borrow for up to 2 weeks. A friendly reminder will be given if books become overdue.
- Students must have a library bag to borrow. School bags are available from the Uniform Shop.
- The students name should be clearly marked on his/her bag.



Scholastic Book Club

Twice a term your child will take home an issue of the Scholastic Book Club. Book Club offers a convenient way to purchase the best books at huge discount prices. Prices are as low as \$1.00.

By purchasing from Scholastic Book Club, our school can earn FREE teaching materials and resources for the library and classroom. Every order you or your child places earns bonus points to be used at our school. At Branxton Public School we only accept LOOP orders (no cash orders). It is extremely easy and convenient to order and pay for Scholastic Book Club by using LOOP.

Sport

Branxton Public School offers many opportunities for students from Kindergarten to Year 6 to participate in sports activities. Primary students participate in weekly sport, each term your child will be advised as to what day they will participate in sporting activities. Students are encouraged to be part of the annual school swimming, cross country and athletics carnivals as well as participate in gala days and the PSSA Knockout competitions in a variety of sports.

Infants students participate in weekly sport, each term your child will be advised as to what day they will participate in sporting activities and will take part in activities that are designed to promote a healthy lifestyle, improve co-ordination and gross motor skills and encourage sportsmanship.



High School

Rutherford Technology High school is our local (or feeder) high school

Most students who attend our school enrol in the local Government High School when they have completed Year 6, provided they live in the designated feeder High School area.

Students who sit the Selective High School may also be eligible for entry to Selective High School placement, however placement is limited to the top performers only and students sit an external examination set by the Board of Studies. All students wishing to sit the test need to apply beforehand, usually while they are in Year 5.

Local high school enrolments are arranged by the high school. Parents are required to complete the forms sent home during the year. The local high school conducts induction/orientation days for new Year 7 students during their final year in Year 6. Our school supports their transition by running comprehensive programs to assist our students in moving from one school to the next.



